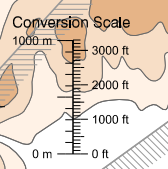
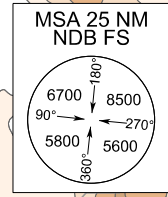
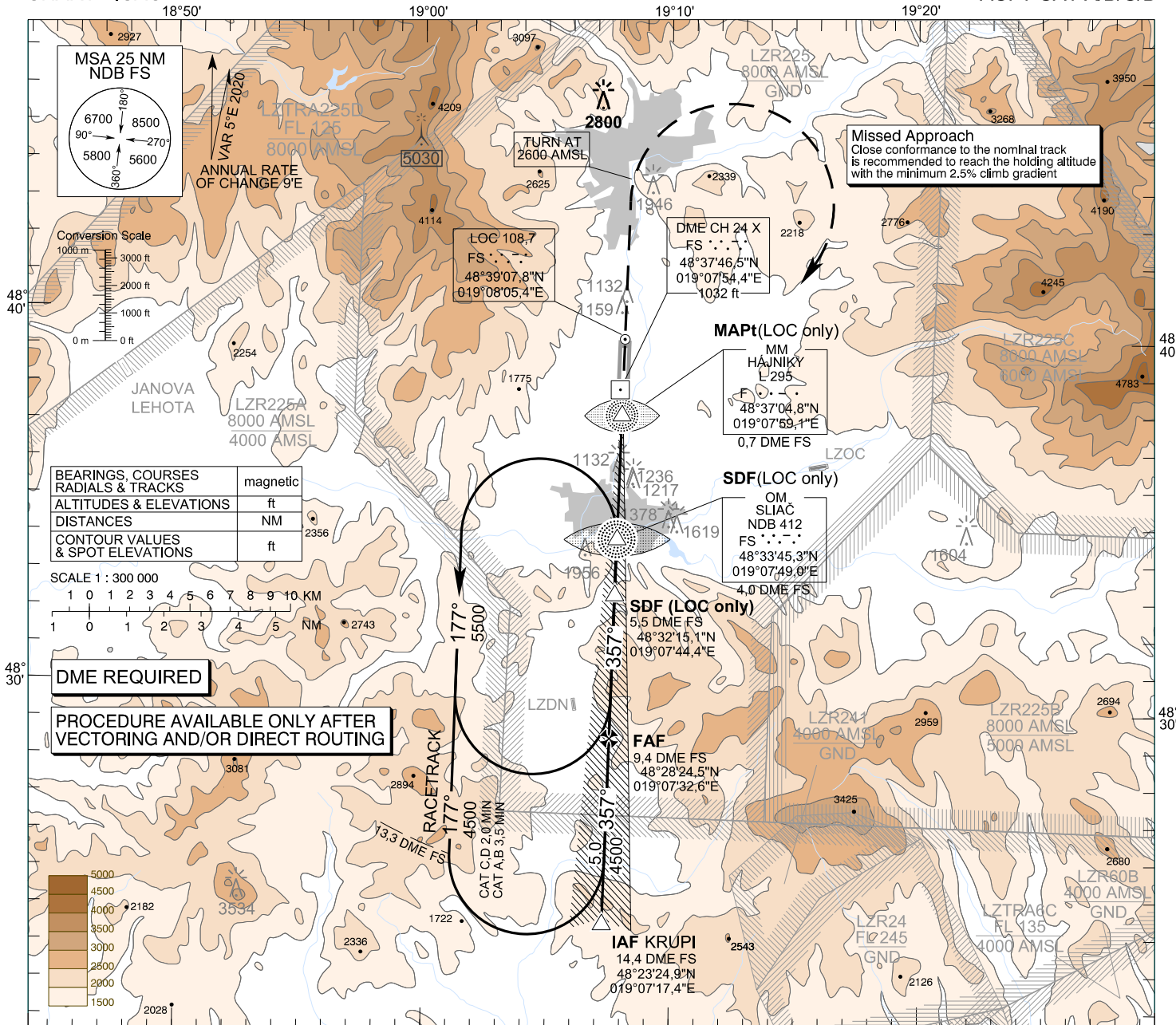


**INSTRUMENT  
APPROACH  
CHART - ICAO**

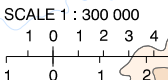
**TRANSITION ALTITUDE**  
10 000 ft  
AD ELEV 1044,0 - 38 hPa  
THR RWY 36 ELEV 1014,5 - 37 hPa

**SLIAČ APPROACH/RADAR** 119,155  
**SLIAČ TOWER** 122,905

**SLIAČ (LZSL)  
ILS CAT I or LOC Y RWY 36  
ACFT CAT A/B/C/D**

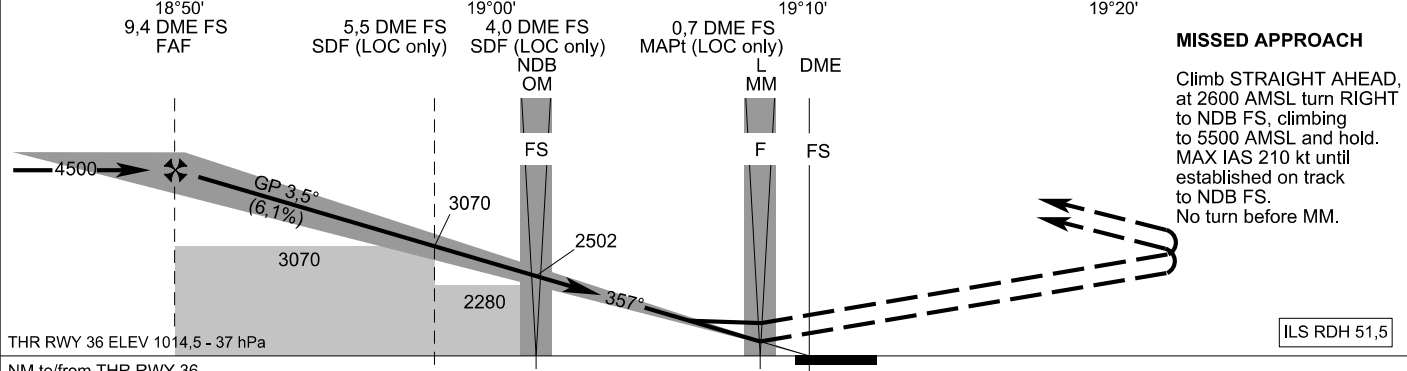
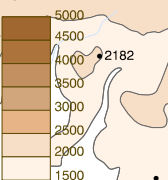


BEARINGS, COURSES RADIALS & TRACKS	magnetic
ALTITUDES & ELEVATIONS	ft
DISTANCES	NM
CONTOUR VALUES & SPOT ELEVATIONS	ft



**DME REQUIRED**

**PROCEDURE AVAILABLE ONLY AFTER  
VECTORIZING AND/OR DIRECT ROUTING**



**MISSED APPROACH**  
Climb STRAIGHT AHEAD, at 2600 AMSL turn RIGHT to NDB FS, climbing to 5500 AMSL and hold. MAX IAS 210 kt until established on track to NDB FS. No turn before MM.

THR RWY 36 ELEV 1014,5 - 37 hPa  
NM to/from THR RWY 36

	OCA (OCH)	ASC	A				B		C		D	
			2.5%	5.0%	ft	ft	ft	ft	ft	ft	ft	ft
Straight-In Approach	CAT I	2.5%	ft	1763 (749)	1777 (763)	1787 (773)	1800 (786)					
	without SDF	5.0%	ft	1176 (162)	1186 (172)	1202 (188)	1220 (206)					
	with SDF	2.5%	ft			3070 (2056)						
	with SDF	5.0%	ft			1940 (926)						
Circling (* see Note)		2.5%	ft			3070 (2056)						
		5.0%	ft			1520 (506)						
			ft	2410 (1366)		2810 (1766)		2840 (1796)				

DME FS	NM	9.0	8.0	7.0	6.0	5.0	4.0	3.0	2.0
ALTITUDES	ft	4361	3989	3617	3246	2874	2502	2131	1759
Ground speed	kt		70	90	100	120	140	160	180
FAF - MAPt (8,7 NM)	min:sec		7:27	5:47	5:13	4:20	3:43	3:15	2:54
Rate of descent (6,1%)	ft/min		434	557	619	743	867	991	1115

CHANGES: new chart